

Fra toppen

Primadonnaer og pragmatikere, forén eder!

Påsken står for døren, og instituttet tar en velfortjent pust i (ski)bakken. Jeg har nå fått anledning til å besøke 12 av instituttets 14 forskningsgrupper. Dette har gitt meg mer innsikt i hva BIOs forskere driver med, jeg har fått truffet de fleste av instituttets ansatte, og vi har hatt mange hyggelige og konstruktive diskusjoner. Vi har fått diskutert forskningsprioriteringer og undervisningsrevisjon, og jeg har lyttet og lært.

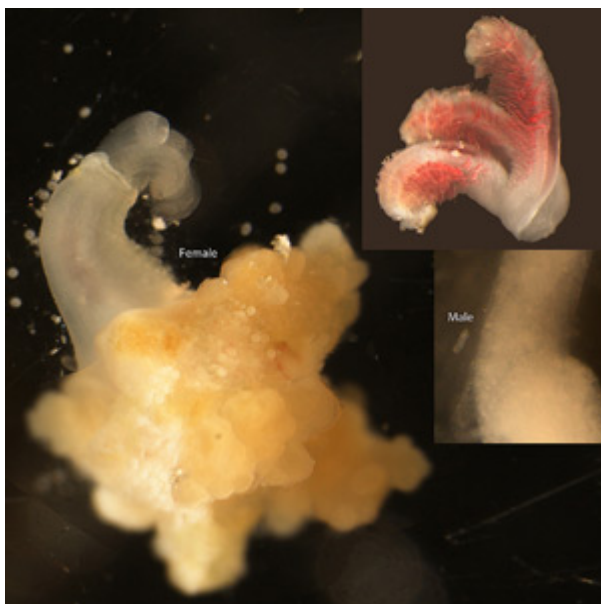
Underveis har jeg gått på Universitets- og høyskolerådets lederkurs, og lært å dele mine ansatte inn i primadonnaer, prestasjonstrippere, pragmatikere og lønnsinntakere. En god blanding av de tre første er positivt, og det tror jeg vi har, mens den siste gruppen, dvs. de som bare er ute etter å maksimere sin "belønning vs. innsats-balanse" (!), har jeg heldigvis ikke sett så mange av. De er nemlig kjent for å suge energi ut av de tre p'ene.

Fremover må vi alle, både primadonnaer og pragmatikere, fokusere på strategiarbeid, evalueringen av biofagene, god undervisning og gode NFR-søknader frem mot juni-fristen.

I mellomtiden ønsker jeg alle god påske!

Hilsen Anders

Ukens bilde



Easter bones!

Photographer: **Christoffer Schander; Marine Biodiversity**

Please save your Easter bones! Schander needs more large bones. Please bring in any left after Easter!

This picture shows the bone eating polychaete "*Osedax mucofloris*" collected from bones that were sunk in Bjørnafjord in April and recovered in February. The large picture shows a female, the small dots surrounding it are eggs. The top right inset is a detail of its tentacle crown and the other inset is a dwarf male next to a part of the tentacle. This worm has never before been reported from Norway,

You are invited to submit photos (electronically!) for "Ukens bilde". Please include a very short description and credit information. Picture can be of researchers / students in action, technology, organisms, field sites ... Please send your pictures to [Elinor Bartle](mailto:Elinor.Bartle@iuhv.uib.no)

Innhold:

Fra toppen	1
Primadonnaer og pragmatikere, forén eder!	1
Easter bones!	1
Ukens bilde	1
Siste nytt fra BIO	3
Hoveddøren stengt 31. mars, BIO-fest 10. juni, forskningstermin - BIO søknadsfrist 1. mai, ventilasjonstider i BIOs arealer, personlige websider, skal du ha møter eller venter gjester?	3
Siste nytt fra verden rundt oss	4
Forskningsdagene 2010, MCB arrangerer samling for PhD-studenter og postdocer, ledige stillinger for biologer	4
Forskning: utlysninger, nye satsinger og prosjekter	6
Forskningsrådet: Utlysninger fra HAVKYST og MILJØ 2015 med mer, Nye Marie Curie utlysninger og informasjonsseminar, Erasmus Mundus, FUGE-penger til proteomikk forskning, Rettelse: Søknadsfrist prosjektmidler ernæringsrelatert forskning	6
Møter, seminar og arrangement	8
Course in observation/measurement error in analysing biological data, World conference on Marine Biodiveristy, FHF rekrutteringsseminar, Marine Board Forum: Marine observatories for monitoring and research,	8
Nye artikler	10
Early diet effects on growth performance in Atlantic cod, Between-year variations in zooplankton, Characterization of a VHS virus genotype III isolated from rainbow trout, Paranucleospora theridion n. gen., n. sp., Prescribed burning of northern heathlands, The "Killing the Winner" Hypothesis Revisited	10

Siste nytt fra BIO

Hoveddøren stengt 31. mars, BIO-fest 10. juni, forskningstermin - BIO søknadsfrist 1. mai, ventilasjonstider i BIOs arealer, personlige websider, skal du ha møter eller venter gjester?

Hoveddøren stengt 31. mars

Onsdag 31. mars vil hoveddøren til Thormøhlensgate 53A/B holdes stengt pga. sterk reduksjon i bemanningen i administrasjonen.

BIO-fest 10. juni

Den **10. juni (torsdag)** blir det forsinket julefest, sammenflytningsfest, sommerfest, nyinstituttlederfest etc. på BIO. Mye mer informasjon kommer etter hvert – men merk av i kalenderen nå!

Behov for faglig påfyll? Les videre om Søknad om forskningstermin:

Det er nå klart for ny søknadsrunde om tildeling av forskningstermin. Instituttet skal oversende søknadene om forskningstermin i prioritert rekkefølge innen tirsdag 1. juni 2010 og internfristen til BIO fra den enkelte forsker settes til **1. mai 2010** (I henhold til "Retningslinjer for tildeling av forskningstermin for vitenskapelige stillinger ved Universitetet i Bergen", er frist for søknad om forskningstermin 1. mai)

Kriteriene for prioritering av søknadene, regler for søknad om økonomisk støtte til dekning av merutgifter ved utenlandsopphold under forskningstermin samt rundskriv og skjema finner du [her](#). Dersom det også søkes om midler til økonomisk støtte ved utenlandsopphold under forskningstermin, må det gis en klar prosjektomtale for utenlandsoppholdet, se også her kriteriene. Til informasjon kan det opplyses at fakultetsstyret har vedtatt å prioritere langtidsoffhold ved utenlandske læresteder siden erfaringene tilsier at dette som oftest gir et større utbytte av forskningsterminen. Les hele skrevet fra fakultetet [her](#).

Ventilation of offices and labs at BIO

Ventilasjon i **Nybygget** (Thormøhlens gate 53 A & B) / *in BIO's new building ...*

Kontorareal: Ventilasjon er i drift mandag til fredag kl 0530 til 1900.

Offices: M-F 05:30-19:00

Laboratorier: Ventilasjon er i full drift døgnet rundt.

Labs: 24/7

Ventilasjon i **Bioblokka** (Thormøhlens gate 55) / *HIB BIO-block*

Kontorareal: Ventilasjon er i drift mandag til fredag kl 0630 til 2000.

Offices: M-F 06:30-20:00

Laboratorier: Ventilasjon er i full drift mandag til fredag fra kl 0700 til 1900, lørdag kl 0900 til 1500.

Utanom disse tidene går labventilasjon på halv styrke.

Labs: M-F 07:00-19:00 and Sat 09:00-15:00 100% otherwise 50%

The screenshot shows the website for the Institute of Biology. At the top, there is a navigation menu with links for 'Utdanning', 'Forskning', 'Om instituttet', and 'Kontakt'. Below the menu is a search bar with the text 'Medarbeidere ved Institutt for biologi' and a search icon. A list of letters (A-Z) is displayed below the search bar. Two search results are shown:

- Aadnesen, Agnes**
Overingeniør
Tlf: 55 98 39 60
Agnes.Aadnesen@bio.uib.no
- Aarnes, Ingelinn**
Stipendiat
Tlf: 55 58 33 45
Ingelinn.Aarnes@bio.uib.no

Personal web pages

When you have finished your Easter detective story – think about updating your personal page on the external web!! It is not too long before the FriBIO deadline in June!

The following people have good personal pages that can be used as examples:

[Arild Folkvord](#), [Henrik Glenner](#), [Jan Heuschele](#) (a visiting researcher!), [Cathy Jenks](#), [Jens Nejtgaard](#), [Jessica Ray](#), [Kirsan Redmond](#), [Anne Gro Salvanes](#),

BIO-info

Nyheter fra Institutt for biologi

[Paolo Simonelli](#), [Kjersti Sjøtun](#), [Richard Telford](#), [Christiane Todt](#), and [Vigdís Vandvik](#).

A number of people have put in pictures. If you would like to use your old picture Thelma Kraft has access to the catalogue where they are. Picture prizes go to: [Endre Grimsbo](#), [Thelma Kraft](#) (truly lovely smile!) and [Glenn Bristow](#).

External web help: Alt om Eksternweben: <http://wikihost.uib.no/ewwiki/> Se: <http://webred.b.uib.no/>.

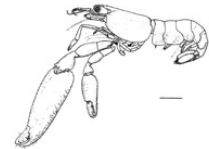
On the external web, remember there are pages for BIO ansatt/staff with helpful links to sites at BIO and UiB on BIO's [Norwegian](#) and [English](#) site. Please contact Elinor if there is a useful link missing.

Gjester/møtedeltakere må hentes i ekspedisjonen

BIOs ekspedisjon får ofte henvendelser fra personer som skal delta i et møte, eller som skal besøke en BIO-ansatt. Ekspedisjonen ringer til den aktuelle person, og hver og en av oss må ta ansvar for å hente gjesten i ekspedisjonen og følge vedkommende til riktig sted. Man kan gjerne opplyse i møteinnkallingen at eksterne deltakere vil bli hentet i ekspedisjonen.

A NUFU shrimp

BIO scientists [Glenn Bristow](#), [Tore Høisæter](#) and [Rune Rosland](#) have been involved in NUFU projects in Vietnam. Recently some of the researchers they had been collaborating with published a paper identifying a new species of symbiotic shrimp that has been called *Periclimenaeus nufu* in honour of their NUFU collaboration! [Read more.](#)



Do Fish feel pain?

[Victoria Braithwaite](#) a Professor-II from the Aquatic behavioural ecology research group, has recently come out with a new popular science book entitled "Do Fish Feel Pain?". This theme is currently attracting considerable interest and has implications for aquaculture and fisheries. Read about the book from [Oxford University Press](#) and also [here](#).



Delvis bestått for Wikipedia

En stryk og to bestått, er forskernes, bl.a. [Harald Kryvi](#), konklusjon. Les mer fra [Studvest](#), [Stavanger Aftenblad](#) og les tilsvarende sak i [Computerworld](#)



Pøser ut kjemikalier mot resistent lakselus

Frank Nilsen sier at bruken av kjemiske middel mot lakselus eksploderte i fjor. Over 5000 kilo blei pøst ut i oppdrettsanlegga. Det er 23 gonger meir enn året før. Les mer fra [Bergens Tidende](#)

Siste nytt fra verden rundt oss

Forskningsdagene 2010, MCB arrangerer samling for PhD-studenter og postdocer, ledige stillinger for biologer

Forskningsdagene 2010 – bidrag ønskes

Tema for 2010 er "Forskningens verktøy", men tema er ment som inspirasjon, og ikke bindende. Les mer om tema, og hva det omfatter, på [Forskningsdagens nasjonale nettsider](#). Norges Forskningsråd har bedt om å få ha den nasjonale åpningen i Bergen i år.

Til disse arrangementene trenger vi bidrag fra UiB-forskere:

Kunnskapsfest og skoledag, Skoleprosjekt, Forsker Grand Prix, Forsker til lunsj, Bidrag til



byvandringar ...

Les mer på [Forskningsdagens websider i Bergen](#). Les [invitasjon til å delta](#).

Remember - Earth Hour this weekend

[Earth Hour](#) is the world's largest climate awareness campaign. It's as easy as turning off your lights. On March 27 at 20:30, hundreds of millions of people around the world will turn off their lights for an hour to demand action on climate change. [Learn more](#), and from [Norway's Earth Hour web page](#)



MCB - Young Scientist Retreat Bergen 2010

Friday May 7th 2010; 1 pm - 6 pm (+ dinner) at Vilvite

We invite you to MCB's Young Scientist Retreat 2010 (YSR'10). It is a great opportunity to meet your fellow PhD students and postdocs and learn about their research. We encourage you to submit an abstract of your work (or any published work that you find interesting). From the submitted abstracts, talks will be drawn (presentations of 10 to 15 min).

Registration and Abstract Deadline: April 16th, 2010 [More information](#).

Hvileeskjær i yngrebølgens tid

Sist torsdag dukket det opp et ord i den politiske debatt som vekker ubehagelige minner for alle som studerer og arbeider ved universiteter og høyskoler i dette landet. «Hvileeskjær» var det ordet Sigbjørn Johnsen brukte for å understreke at neste års statsbudsjett vil bli stramt. [Innlegg i Dagsavisen](#) av Ole Petter Ottersen, Rektor ved Universitetet i Oslo

Danning i utdanning

Leserbrev av prorektor Berit Rokne, viserektor Kuvvet Atakan og instituttleder Roger Strand ved Senter for vitenskapsteori. Les mer fra [På Høyden](#)

Plastiki

a ship made of 12 500 plastic bottles is sailing across the Pacific Ocean to draw attention to the issue of marine waste. [learn more](#).

Watch a video about a model that ties mathematics and evolution and crochet together!

[Crocheted models](#) of coral reefs demonstrate mathematics and evolution! This includes a TED presentation video worth watching.

Ledige stillinger for biologer

Stillinger utlyst på UiB (herunder stillinger på BIO) finner du [her](#).

28.03	Stipendiat i molekylærbiologi og økologi ved Institutt for biologi
30.03	PhD positions / eleven Marie Curie Early Stage Researchers studying palaeobiodiversity of molluscs, bryozoans, calcareous algae, corals and large benthic foraminifera. learn more .
30.03	Full professor in Biological Oceanography at IFM-GEOMAR in Kiel, Germany. More
31.03	Driftsbiolog matfisk, Lerøy Hydrotech AS for biolog med bachelor eller master – 3 stillinger
31.03	Faculty position in BioGeology , Université Libre de Bruxelles, Belgium
31.03	Økonomileiar/seniorkonsulent , Institutt for biologi
31.03	2 post docs University of Washington
23.04	Professorship in plant physiology at the University of Innsbruck, Austria
30.04	PhD position developmental Biology, Villefranche, France
?	Postdoc position on biogeochemical modelling, Brest, France
various	22 PhD & 6 post-doc: GREENCYCLESII a Marie Curie Initial Training Network
Spring 2010	10 post doctoral positions at The Alexander von Humboldt Foundation and the Cluster of Excellence „The Future Ocean” at the Christian-Albrechts University in Kiel, Germany

Forskning: utlysninger, nye satsinger og prosjekter

Forskningsrådet: Utlysninger fra HAVKYST og MILJØ 2015 med mer, Nye Marie Curie utlysninger og informasjonsseminar, Erasmus Mundus, FUGE-penger til proteomikk forskning, Rettelse: Søknadsfrist prosjektmidler ernæringsrelatert forskning



Midler til marin forskning i 2011 (HAVKYST)

Havet og kysten lyser ledig totalt 17.5 mill kr til prosjekter med oppstart i 2011. Det er tematiske prioriteringer innenfor alle delprogrammene.

Søknadsfrist: 02.06.2010

[Les mer](#)

64 mill kr til miljøforskning (MILJO2015)

Miljø 2015 lyser ut midler innen temaområdene SAMFUNN og LAND. For søknader med partnere fra land i Sør er ekstra finansiering mulig. Det åpnes for søknadstypene Forskerprosjekt og Kompetanseprosjekt med brukermedvirkning (KMB).

Søknadsfrist: 02.06.2010

[Les mer](#)

0,25 mill kr. til nettverks- og formidlingstiltak innen miljøforskningen (MILJO2015)

MILJØ 2015 ønsker å støtte tiltak for å styrke nettverksbygging for relevante miljøer i programmet, og å stimulere til økt populærvitenskapelig formidling fra programmets forskning.

Søknadsfrist: 02.06.2010

[Les mer](#)

Arrangementsstøtte Forskningsdagene 2010 (ArrForskdag)

Forskningsrådet inviterer til konkurranse om støtte på inntil 50.000 kroner til nye, spennende arrangementer under Forskningsdagene.

Søknadsfrist: 12.04.2010

[Les mer](#)

Marie Curie utlysninger

EU kommisjonen har publisert 3 nye utlysninger for Marie Curie individuelle stipend. Stipendene kan brukes til å sende erfarne forskere (minstekrav er doktorgrad) ut av Norge til Europa eller hele verden. Stipendene kan også brukes til å rekruttere gode forskere fra hele verden til UiB.

Programmet er åpent for alle fag.

Frist for alle er 17. august 2010 og samlet budsjett er 161 millioner €



Ta gjerne kontakt med EU rådgiverne på Forskningsavdelingen hvis du er interessert eller skal rekruttere en forsker til UiB - de hjelper til med søknaden.

Infosider og Utlysninger finner du mer om under:

Intra-European Fellowships for Career Development: [Infoside PEOPLE- IEF](#), [Utlysning](#)

International Incoming Fellowships : [Info-side PEOPLE-IIF](#), [Utlysning](#)

International Outgoing Fellowships for Career Development: [Infoside PEOPLE - IOF](#), [utlysning](#)

I forbindelse med de overnevnte utlysningene arrangerer forskningsavdelingen et

[Informasjonsseminar onsdag 19. mai](#) om Marie Curie

Seniorforskere, postdocs, PhD kandidater og administratorer er da velkommen til å møte Per Magnus Kommandantvold, NFR, nasjonal ekspert på Marie Curie **som** vil fortelle om individuelle stipend og

BIO-info

Nyheter fra Institutt for biologi

Initial Training Network. UiB forskere forteller om egne erfaringer. Møtet holdes på Vilvite, konferanserom A+B. fra kl 10-12:30

Påmelding : send en epost med tittel "Marie Curie" til Anja.Hegen@fa.uib.no

Erasmus Mundus

The ERASMUS MUNDUS applications for grants for EU students are still open until April 15, 2010. Within the ERASMUS MUNDUS Master Programme on Marine Biodiversity and Conservation (EMBC) we still have 8 grants open for Bachelor Biology students interested in the EMBC master programme. Information and applications can be made online on the following website : <http://embc.marbef.org>.

Rettelse - søknadsfrist for søknad om prosjektmidler til ernæringsrelatert forskning

Universitetet i Bergen (UiB) vil styrke forskning og utdanning innen ernæring. UiB har tatt initiativ til og oppnevnt et programstyre for ernæring, som er sammensatt av ledere fra samarbeidende institusjoner (Helse Bergen, NIFES, Havforskningsinstituttet og Fiskeriforskning) og næringslivet (Rieber-Toro). Programstyret inviterer fagmiljøer ved UiB og samarbeidende institusjoner til å fremme prosjektforslag innen ernærings- og ernæringsrelatert forskning.

Innenfor budsjettammen vil 3-6 prosjekter på inntil 1.000.000 NOK kunne innvilges, gitt at søknadene holder tilstrekkelig faglig nivå og at kravet til samarbeid er innfridd. Bevilgningene vil bli gitt for året 2010. **Søknadsfrist: 6. april.** [Les mer](#)

Søknaden sendes elektronisk til Forskningsavdelingen ved Universitetet i Bergen på adressen post@fa.uib.no. Søknaden sendes under overskriften "Søknad om prosjektmidler – ernæring".

Funding for projects utilizing human biobank material for proteomics analysis

The board of FUGE (the Functional Genomics programme of Norway) has granted 2.3 mill NOK to be distributed to research projects in order stimulate use of bio bank material in proteomic research. For this call 1.1 mill NOK of the 2,3 mill NOK is available. The grant is part of the effort to stimulate researchers to utilize multiple FUGE platforms in their research and to encourage contact and interdisciplinary cooperation between the different technology platforms. [Les mer](#)
Deadline: 16th April.

Regionalt Forskningsfond vestlandet

Regionale forskningsfond er ei ny satsing frå 2010 som skal styrke utvikling og innovasjon på Vestlandet ved å stø opp under regionalt prioriterte forskningstema. Regionalt forskningsfond Vestlandet planlegg ei første utlysning 21. april 2010 med søknadsfrist 2. juni 2010. Søknadene vil bli behandla i styremøte 28. september 2010. Tema: Bærekraftig matproduksjon, Energi og maritim sektor og Offentlige utviklingsprosjekt. [Les mer.](#)



Pris for fremdragende forsknings- eller utviklingsarbeid innenfor de 3 R-ene

Norecopa har i år innført en pris for fremdragende arbeid innenfor de 3 R-ene. Årets pris er på kr. 30.000 med diplom. Prisen deles ut under Norecopas årsmøte torsdag 3. juni 2010 på Adamstua. Formålet med prisen er å øke anerkjennelsen og anvendelsen av "de 3 R-ene" i forskning og undervisning der dyr eller dyremateriale brukes. Det legges særlig vekt på forsknings- og utviklingsarbeid som bidrar til denne prosessen i Norge. Såvel vitenskapelige, teknologiske, praktiske og administrative tiltak kan premieres. Vedtektene for prisen og informasjon om priskomiteén kan leses her: <http://www.norecopa.no/sider/fil.asp?id=317>. Nominasjonsskjemaet kan lastes ned her: <http://www.norecopa.no/sider/fil.asp?id=316> Selvnominasjon er tillatt. Fristen er fredag 16. april kl. 1600

Changing Earth Science Network initiative

The closing date for accepting research proposals for the new call of the Changing Earth Science Network is the **29th March 2010**. The main objective of the Changing Earth Science Network initiative is to provide support to young researchers (in possession of a doctoral degree) in ESA Member States (including Canada and the



BIO-info

Nyheter fra Institutt for biologi

Czech Republic), initiating a scientific career in the context of Earth Science, to undertake leading edge research contributing to advance towards the achievement of the new scientific challenges of the Living Planet Programme maximising the use of ESA data and EO assets. [Read more.](#)

POGP Network early career scientists opportunities (capacity building)

- Fellowship to visit other oceanographic centres for a period of between 1 to 3 months.
 - special Visiting Fellowship for on-board training on an Atlantic Meridional Transect Cruise
- [Learn more.](#)

Mer info om følgende utlysninger og mange flere (inkl. løpende, dvs. uten frister) finner du [her](#)

Husk å sende søknadsutkastet til post@bio.uib.no 1 uke i forveien (gjelder ikke mindre bevilgninger som legater og fonds)

29. mar 31. mar	ESA Changing Earth Science Network - Call for Research Proposals HFSP Submission deadline
01. apr 12. apr 21. apr 21. apr 21. apr 21. apr 30. apr	Nordic Marine Academy : siste organisering av forskerkurs og støtte til konferanser og workshops POGO opportunities for early career scientists SFI Endelig søknad NATUROGNAERING (NFR) JOINTINDNOR (NFR) og INDOOR (NFR) PROREAL RENENERGI Daniel Jouvance International Prize for young researchers in Marine Biology
01. mai 31. mai	Nordic Marine Academy : siste mobilitetstipend EUROFLEETS call for multidisciplinary practical ship-based training courses
02.juni	Regionale forskingsfond
02.juni	Aurora-programmet . Forskerutveksling mellom Norge og Frankrike (IS-AUR)
02.juni	Forskningsrådets hovedsøknadsfrist for HAVKYST , MILJØ2015
17.aug	Marie Curie individuelle stipend: FP7-PEOPLE-2010-IEF , FP7-People-2010-IIF , FP7-PEOPLE-2010-IOF

Møter, seminar og arrangement

Course in observation/measurement error in analysing biological data, World conference on Marine Biodiversity, FHF rekrutteringsseminar, Marine Board Forum: Marine observatories for monitoring and research,

New course in observation/measurement error in analysing biological data

The Centre of Ecological and Evolutionary Synthesis (CEES) is arranging a course on 'Observation/Measurement Error in Analysing Biological Data (BIO 9905), 3-7 May 2010. The course is for PhD students (internal and external). The course is worth 5 study points and will include lectures and computer labs of 5-day duration. In addition there will be a theoretical curriculum for self studies in advance and a home exam/report that must be passed at the end of the course. The course will be delivered by our guest Professor John P. Buonaccorsi (University of Massachusetts), co-organized by our resident Professor Glenn-Peter Sætre, and is expected to be held in Kristine Bonnevie's Hus, Blindern Campus (details to follow).

For further details, including a course description and pensum see: <http://www.cees.uio.no/news/2010/bio9905-2-course-outline.pdf>

Further information including registration details will soon be available at the following address: <http://www.uio.no/studier/emner/matnat/biologi/in-english.xml>

World Conference on Marine Biodiversity

The University of Aberdeen, in partnership with the University of St Andrews, is delighted to be bringing the World Conference on Marine Biodiversity to Scotland from 26-30 September 2011.

The conference will provide the premier platform for discussion, dissemination, policy analysis and development of the key issues surrounding marine biodiversity, as well as providing an opportunity for the marine community to further influence the key thinkers and policy makers worldwide. More information [here](#)

FHF og Sett Sjøbein arrangerer rekrutteringssamling

På grunn av de positive tilbakemeldingene etter fjorårets rekrutteringssamling, ønsker Sett Sjøbein med dette å inviterer til årets rekrutteringssamling. Ut fra tilbakemeldingene etter fjorårets arrangement, er årets rekrutteringssamling utvidet til å bli en todagers samling. Det er lagt opp til felles middag etter dag 1, og det er godt med tid til å snakke sammen i pausene og lunsjene.

Samlingen finner sted 3.4.mai på Rica Hell Hotell, Værnes. Vedlagt følger invitasjonen med mer informasjon i forhold til arrangementet, samt litt praktisk informasjon om Sett Sjøbein. Rekrutteringssamlingen er gratis å delta på, og Sett Sjøbein betaler lunsj for alle deltakerne. Her finner du mer informasjon om prosjektet [Sett Sjøbein](#) og om [Rekrutteringssamlingen](#)

2nd Marine Board Biennial Forum

[The 2nd Marine Board Forum *Towards a European Network of Marine Observatories for Monitoring and Research*](#), will be held in Brussels on 16 September 2010. The expected output – *a Marine Board statement on a vision and recommended actions towards a European network of long-term marine observatories* - will be presented at EurOCEAN 2010, the Belgian EU Presidency Conference on “Grand Challenges for Marine Research in the Next Decade” (12-13 October 2010, Ostend).

his Vision Statement will include a roadmap with pragmatic, high-level recommendations and related milestones, targeted towards a wide range of stakeholders. A final general discussion session will take place in the afternoon of the Forum in order to finalise the Forum Statement. The Statement will strive to convey integrated views and multidisciplinary consolidated advice for the future implementation and management a European network of marine observatories.

Teknologi og feltutbygginger i Arktis

NTVA (Norges tekniske Vitenskapsakademi) i samarbeid med Norges Vitenskapsakademi for Polarforskning (NVP) inviterer til åpent seminar i Trondheim – dvs seminaret er åpent for alle interesserte. Torsdag 22. april 2010 kl. 16:00-1900 (Merk tidspunktet). Forfriskninger og registrering fra kl. 1530. Sted: Lerchendal Gård, Trondheim.

Mer informasjon om seminaret [her](#).

NTVA inviterer til møte i Bergen tirsdag 20. april 2010 kl. 19:00

Sted: Historisk kafé, Naturhistorisk museum, Museplass 3

Open Seminar on Environment and Marine Wind Platforms

12 May 2010 with UNI Research at VilVite. [Read more.](#)

Renewable Energy Research Conference 2010

Renewable energy beyond 2020 : The Centre for Renewable Energy welcomes you to an international research conference on renewable energy technologies. **7th – 8th June 2010 in Trondheim, Norway**
The conference aims at gathering researchers and developers from the renewable energy sector as well as governmental bodies and NGOs.

Deadlines:

Abstracts for oral and poster presentations: March 8th 2010

BIO-info

Nyheter fra Institutt for biologi

Acceptance of contributions: April 1st 2010
Early bird registration (2500 NOK): Until April 19th 2010
Registration (3500 NOK): After April 19th 2010
For more information, see the attached file or go to www.sffe.no/conference

Annerledestenkende og kunnskapsveksten

NTVA (Norges tekniske Vitenskapsakademi) arrangerer til åpent møte i Bergen Tirsdag 20. april 2010, kl. 19:00 på Historisk kafé, Naturhistorisk museum, Museplass 3.
Foredrag av: Per Arne Bjørkum, dekan, Universitetet i Stavanger
Nærmere informasjon om foredraget på: [Mer informasjon om møte og påmelding her](#)

Summer school programmes

Date	Location	Course title	application deadline
May 3-7	Centre for Ecological & Evolutionary Synthesis Institute of Biology, University of Oslo	NEW COURSE IN OBSERVATION/MEASUREMENT ERROR IN ANALYSING BIOLOGICAL DATA	Contact jaynel@bio.uio.no
May 24-29	Mammal Research Institute, Polish Academy of Sciences, Białowieża, Poland	Summer School in Ecology and Biodiversity: Understanding patterns and Processes	31 March
17 July - 1 August	Island of Madeira	3rd EDIT Summer School of Taxonomy	31 May
9 August – 3 September	Trondheim	2010 Industrial Ecology Summer School, NTNU	7 April
August 23- 27	Brest, France	ClimECO2 Oceans, Marine Ecosystems, and Society facing Climate Change	15 April
Sept 5-14	Peyresq, France	Alter-Net Summer Schools: Biodiversity & Ecosystem Services	15 April

Nye artikler

Early diet effects on growth performance in Atlantic cod, Between-year variations in zooplankton, Characterization of a VHS virus genotype III isolated from rainbow trout, Paranucleospora theridion n. gen., n. sp., Prescribed burning of northern heathlands, The "Killing the Winner" Hypothesis Revisited

Petter Larsson: Between-year variations in crustacean zooplankton

Petter Larsson, Heidi Hansen, Linda Kristin, Bjørnstad Helland *Between-year variations in the development of crustacean zooplankton in the Norwegian subalpine lake, Øvre Heimdalsvatn* Hydrobiologia (2010) 642:61–70 DOI 10.1007/s10750-010-0159-1

Abstract: Data from the International Biological Programme (IBP) and subsequent studies have been re-analysed to test the two hypotheses which previously have been suggested concerning the zooplankton in the mountain lake, Øvre Heimdalsvatn: (1) the average temperature in June, more than other summer months, is affecting the growth rate and population densities of zooplankton in the lake, (2) the invasion of the European minnow (*Phoxinus phoxinus*) has caused changes in the zooplankton community. The analyses have demonstrated that the June temperature strongly affects the growth rate of all the zooplankton species, but that there is no relationship with the population maxima. The

species composition in the crustacean zooplankton has not changed between 1969 and 1999, and any direct impact of the minnows on the zooplankton community could not be detected. Indirectly, the minnows may have reduced the density of invertebrate predators, and thus caused an increase in juvenile survival and increased summer maximum density of *Bosmina longispina*. The variation in density of the copepod, *Cyclops scutifer*, was correlated with the density of *Heterocope saliens*, most likely the result of predator–prey interactions.

Roland M. Koedijk, Arild Folkvord, Sigurd O. Stefansson, Albert K. Imsland: Early diet effects on growth performance

Roland M. Koedijk, Nathalie R. Le François, Pierre U. Blier, Atle Foss, Arild Folkvord, Delphine Ditlecadet, Simon G. Lamarre, Sigurd O. Stefansson, Albert K. Imsland, *Ontogenetic effects of diet during early development on growth performance, myosin mRNA expression and metabolic enzyme activity in Atlantic cod juveniles reared at different salinities*, Comparative Biochemistry and Physiology, Part A 156 (2010) 102–109

Abstract: This study investigates the effect of diet during early development on growth and metabolic capacity in the juvenile stage of Atlantic cod. Growth in three groups of Atlantic cod juveniles (10–70 g) was measured at two salinities (15‰ or 32‰) in combination with two temperatures (10 °C or 14 °C). Groups of cod from a single egg batch differed by having been fed with rotifers (R) or natural zooplankton (Z) during the first 36 days post hatch. A third group was fed zooplankton from 1 to 22 dph, after which diet changed to rotifers from 22 to 36 dph (ZRZ). All fish were weaned at 36 dph. Juveniles from the Z and ZRZ groups performed equally well under all experimental conditions, but fish that had received rotifers as a larval diet showed overall significantly lower growth rates. Growth was significantly enhanced by reduced salinity. Metabolic enzyme activity and relative myosin mRNA expression levels were not affected by larval diet. Muscle AAT and MDH were affected by salinity while these enzymes in liver tissue were affected by the interaction between salinity and temperature. Metabolic enzymes were stronger correlated with fish size than growth rates. Our results indicate that larval diet has a pronounced effect on juvenile growth rates under varying environmental conditions as optimal larval diet (zooplankton) increased juvenile growth rates significantly. Metabolic enzyme activity and relative myosin mRNA expression were not affected by larval history, which suggests that the persisting juvenile growth difference is not a result of differing metabolic capacity.

Henrik Duesund, Stian Nylund, Kuninori Watanabe, Karl F Ottem og Are Nylund: Characterization of a VHS virus genotype III isolated from rainbow trout

Henrik Duesund, Stian Nylund, Kuninori Watanabe, Karl F Ottem, Are Nylund. Characterization of a VHS virus genotype III isolated from rainbow trout (*Oncorhynchus mykiss*) at a marine site on the west coast of Norway. *Virology Journal* 2010, 7:19 <http://www.virologyj.com/content/7/1/19>

Abstract: Background: Norwegian production of rainbow trout (*Oncorhynchus mykiss*) has been without any outbreaks of VHS for many years until the disease emerged in a farm in western Norway in November 2007. The fish were, in addition to VHS virus, positive for gill chlamydia-like bacteria, *Flavobacterium psychrophilum*, and a microsporidian. A new VHS virus genotype III was isolated from the fish in RTgill-W1 cells and the complete coding region (11,065 nucleotides) was sequenced. This virus was also used in a challenge experiment to see if it could cause any mortality in rainbow trout in sea water.

Results: This is the first time a nearly complete sequence of a genotype III virus isolate has been presented. The organization of the genes is the same as in the other VHS virus genotypes studied (GI and GIV). Between the ORFs are nontranslated regions that contain highly conserved sequences encompassing the polyadenylation signal for one gene, and the putative transcription initiation site of the next gene. The intergenic regions vary in length from 74 nt to 128 nt. The nucleotide sequence is more similar to genotype I isolates compared to isolates from genotype II and IV. Analyses of the sequences of the N and G protein genes show that this new isolate is distinct from other VHS virus isolates and groups closely together with isolates from genotype III. In a challenge

experiment, using intraperitoneal (ip) injection of the isolate, co-habitation with infected fish, and bath challenge, mortalities slightly above 40% were obtained. There was no significant difference in mortality between the bath challenged group and the ip injected group, while the mortality in the co-habitation group was as low as 30%. **Conclusions:** All VHS virus isolates in genotype III are from

marine fish in the North East Atlantic. Unlike the other known genotype III isolates, which are of low virulence, this new isolate is moderately virulent. It was not possible to detect any changes in the virus genome that could explain the higher virulence. A major problem for the study of virulence factors is the lack of information about other genotype III isolates.

Stian Nylund, Are Nylund, Kuninori Watanabe og Egil Karlsbakk: *Paranucleospora theridion* n. gen., n. sp.

Stian Nylund, Are Nylund, Kuninori Watanabe, Carl E. Arnesen, Egil Karlsbak. *Paranucleospora theridion* n. gen., n. sp. (Microsporidia, Enterocytozoonidae) with a Life Cycle in the Salmon Louse (*Lepeophtheirus salmonis*, Copepoda) and Atlantic Salmon (*Salmo salar*) Journal of Eukaryotic Microbiology (2010) 57: 95 – 114.

Abstract: *Paranucleospora theridion* n. gen, n. sp., infecting both Atlantic salmon (*Salmo salar*) and its copepod parasite *Lepeophtheirus salmonis* is described. The microsporidian exhibits nuclei in diplokaryotic arrangement during all known life-cycle stages in salmon, but only in the merogonial stages and early sporogonial stage in salmon lice. All developmental stages of *P. theridion* are in direct contact with the host cell cytoplasm or nucleoplasm. In salmon, two developmental cycles were observed, producing spores in the cytoplasm of phagocytes or epidermal cells (Cycle-I) and in the nuclei of epidermal cells (Cycle-II), respectively. Cycle-I spores are small and thin walled with a short polar tube, and are believed to be autoinfective. The larger oval intranuclear Cycle-II spores have a thick endospore and a longer polar tube, and are probably responsible for transmission from salmon to *L. salmonis*. Parasite development in the salmon louse occurs in several different cell types that may be extremely hypertrophied due to *P. theridion* proliferation. Diplokaryotic merogony precedes monokaryotic sporogony. The rounded spores produced are comparable to the intranuclear spores in the salmon in most aspects, and likely transmit the infection to salmon. Phylogenetic analysis of *P. theridion* partial rDNA sequences place the parasite in a position between *Nucleospora salmonis* and *Enterocytozoon bieneusi*. Based on characteristics of the morphology, unique development involving a vertebrate fish as well as a crustacean ectoparasite host, and the results of the phylogenetic analyses it is suggested that *P. theridion* should be given status as a new species in a new genus.

Inger Elisabeth Måren, Joachim Spindelböck, Peter Emil Kaland og Vigdis Vandvik: Prescribed burning of northern heathlands

Inger E. Måren, Janovsky, Zdenek, Joachim P. Spindelböck, Matthew I. Daws, Peter E. Kaland and Vigdis Vandvi. Prescribed burning of northern heathlands: *Calluna vulgaris* germination cues and seed-bank dynamics Plant Ecol (2010) 207:245–256 DOI 10.1007/s11258-009-9669-1

Abstract : The European coastal heathlands are important habitats for international conservation. Today, these low-intensity farming systems are threatened by the cessation of traditional management regimes, such as grazing and prescribed burning. In natural systems, the effects of fire on germination responses are often explained by adaptation to fire over extended periods of time. However, Northern heathlands are semi-natural systems with only a limited fire history. We investigated whether and how the keystone species in this system, *Calluna vulgaris*, responded to prescribed burning, based on previous findings where *Calluna* germinable seedbank densities showed a pronounced peak right after fire. Our main findings were (i) an ecophysiological response to smoke; (ii) a potential explanation for this pattern, revealed by a seed-bank experiment where we managed to re-create the germination pattern experimentally by using an aqueous plant-derived smoke solution; and (iii) a history of anthropogenic use of fire and the development of heathlands in the region documented through palaeoecological investigations.

Frede Thingstad: The "Killing the Winner" Hypothesis Revisited

Christian Winter, Thierry Bouvier, Markus G Weinbauer, T. Frede Thingstad. Trade-Offs between Competition and Defense Specialists among Unicellular Planktonic Organisms: the "Killing the Winner" Hypothesis Revisited. Microbiology and molecular biology reviews (2010) 74: 42-57.

Abstract: A trade-off between strategies maximizing growth and minimizing losses appears to be a fundamental property of evolving biological entities existing in environments with limited resources. In the special case of unicellular planktonic organisms, the theoretical framework describing the trade-offs between competition and defense specialists is known as the "killing the winner" hypothesis (KtW). KtW describes how the availability of resources and the actions of predators (e. g., heterotrophic flagellates) and parasites (e. g., viruses) determine the composition and biogeochemical

impact of such organisms. We extend KtW conceptually by introducing size-or shape-selective grazing of protozoans on prokaryotes into an idealized food web composed of prokaryotes, lytic viruses infecting prokaryotes, and protozoans. This results in a hierarchy analogous to a Russian doll, where KtW principles are at work on a lower level due to selective viral infection and on an upper level due to size-or shape-selective grazing by protozoans. Additionally, we critically discuss predictions and limitations of KtW in light of the recent literature, with particular focus on typically neglected aspects of KtW. Many aspects of KtW have been corroborated by in situ and experimental studies of isolates and natural communities. However, a thorough test of KtW is still hampered by current methodological limitations. In particular, the quantification of nutrient uptake rates of the competing prokaryotic populations and virus population-specific adsorption and decay rates appears to be the most daunting challenge for the years to come.