

Denne ukas viktigste	2
Fortsett å lese flytte-FAQ-en	2
Personal web pages	2
Påmelding til innflyttingsfesten	2
Verneombud for 2010	2
Etasjeansvarlige ved brann	2
Ekstern sensor ved muntlig eksamen	2
Essentials in English	3
Personal web pages	3
2009's accounting wraps up 14.12.	3
FYI: correct (slow) mail and visiting address for BIO	3
Spare equipment to be given away	3
Moving FAQ	3
Moving web page for practical issues, furniture needs and spare furniture/equipment	3
UiB Christmas cards	3
INN Monthly mail- December 2009	3
Siste nytt fra BIO	4
Torsken krymper	4
Søknadsbehandling hos Artsdatabanken	4
EECRG gir bort utstyr til interesserte grupper	4
Lakselusa stor trussel	4
Siste nytt fra verden rundt oss	4
Retningslinjer for sykefravær	4
Elektroniske julekort	4
NFR: store satsinger i 2011	5
Nyttig forskning i mange programmer	5
Økt forskningsinnsats mot lakselus	5
Ledige stillinger for biologer	5
Forskning: utlysninger, nye satsinger og prosjekter	5
Updated Guide for Applicants for the Advanced Grant 2010 Call (third Advanced Grant call)	5
Marie Curie International Research Staff Exchange Scheme (IRSES)	5
EMBO Post doctoral fellowships	5
Ukens bilde	6
Avsluttende mastergradseksamen	6
Elnaz Golshany: Is there a sex difference in susceptibility to infection when <i>Daphnia magna</i> is exposed to <i>Pasteuria ramosa</i> ? A study based on Batesman's principle	6
Faglige møter	6
Sommeropphold og postdoc-stipend	6
Michelsen Guest Lecture	6
Sars Centre guest lecture	6
Erasmus Mundus Joint Master in Evolutionary Biology (MEME)	6
Researchers Night 2010 (Forskningsrådet/EU). Frist 14/12	7
Invitasjon til MNT-konferansen - "Kunnskap for fremtiden", 9.-10. februar 2010 på VilVite i Bergen	7
Summer school programmes	7
Nye artikler	8
Jon Bent Kristoffersen & Anne Gro Salvanes: genetikk og økologi til lysprikkfisk på norskekysten....	8
Diep Mach & Ragnar Nortvedt: kjemisk og næringsmessig kvalitet av ensilasje fra fisk og krabbe	8
Christel Krossøy: uttrykk av K-vitamin-relaterte gener i laks	8
John-Arvid Grytnes: årsaker til diversitet av lav på grantrær	9
Albert K. Imsland: tetthetsavhengig vekst hos flekksteinbit	9

Denne ukas viktigste

Fortsett å lese flytte-FAQ-en

De fleste som skal flytte i denne omgang er allerede i nytt bygg og kontor, og mange har spørsmål. Vi oppdaterer listen over svar på *Ofte Stilte Spørsmål* kontinuerlig. Kanskje har vi allerede funnet svar på noe av det du lurer på? [Sjekk her](#).

Personal web pages

Remember that the old BIO people pages will not work after 31.12.2009. Use these steps to copy over your material to the people pages on the external web (*we are promised that English versions will be available, but the date of their release keeps being delayed).

- Login to edit mode on your external web personal page at: <http://www.uib.no/login>
- Use your usual UNIX password (I suggest you use Firefox as your browser - the external web works better there)
- Open your "old" page in an Explorer browser window
- Then copy directly from one browser window to the other ...

Påmelding til innflyttingsfesten

Meld deg på [her](#) til festen 22.12. kl 12. Kom sulten!

Verneombud for 2010

Det må velges nytt verneombud for BIO på Marineholmen samt ett varaverneombud fra hvert av de to byggene som verneombudet ikke sitter i. I tillegg må det velges verneombud og vara på Marinbiologisk stasjon. Følgende forslag er kommet inn: Verneombud BIO-Marineholmen: Paul Løvik. Vara: Vibeke Saure Lokøy (B-blokken) og Lene Synnøve Halvorsen (A-blokken). Eventuelle andre forslag sendes til [Eva Krzywinski](#) innen utgangen av mandag 14.12.09. Valget vil foregå elektronisk i løpet av uken bortsett fra på Espeland der Agnes vil organisere dette.

Etasjensvarlige ved brann

Det skal oppnevnes etasjensvarlige i tilfelle brann eller annen nødsituasjon som krever evakuering. Vi ber om forslag på en brannansvarlig for hvert av følgende områder: Én pr. etasje i hhv A-blokken og B-blokken. For Bioblokken: én i mellombygget, én i 4. etasje, én i 3. etasje sør og én i 3. etasje nord (ta utgangspunkt i situasjonen etter at anatomene og Goksøyr's gruppe er flyttet inn). Forslag sendes [Eva Krzywinski](#) innen onsdag 16.12.09.

Ekstern sensor ved muntlig eksamen

[Universitetsstyret](#) har vedtatt en endring i Grads- og studiereglementet for UiB som innebærer at det ved muntlig eksamen skal være minst to sensorer, hvorav den ene normalt skal være ekstern (ikke UiB-ansatt). Dersom ingen av sensorene ved eksamen er eksterne, må vurderingsordningen godkjennes særskilt av fakultetet, basert på programsensors evaluering av vurdeingsordningen.

F.o.m. vårsemesteret 2010 skal vi bruke ekstern sensor på muntlig eksamen. Det blir trolig behov for flere sensorer enn vi har registrert på våre lister når denne ordningen trer i kraft. **Vi trenger forslag til nye sensorer til studie@bio.uib.no!** Sensorer i nærområdet er å foretrekke for å holde kostnadene nede.

Mer info om følgende utlysninger og mange flere (inkl. løpende, dvs. uten frister) finner du [her](#)

Husk å sende søknadsutkastet til post@bio.uib.no 1 uke i forveien (gjelder ikke mindre bevilgninger som legater og fonds)

21. des	Obligatorisk skisse SFI (Senter for forskningsdrevet innovasjon (SFI) (Endelig søknad 21. april 2010)	5. jan	FP7: Environment
		14. jan	FP7: KBBE , Ocean of tomorrow, Africa
31. des	Marie Curie Reintegration Grants (RG)	18. jan	Sommerprogram for unge forskere (YSSP)
			IIASA
17. mar	ERC Advanced Grants, Life sciences	31. jan	SCOR visting scholars
25. mar	Marie Curie International Research Staff Exchange Scheme (IRSES)	17. feb	YGGDRASIL (IS_MOBIL) mobilitetsprogram for utenlandske ph.d-studenter og yngre forskere
21. apr	SFI (Senter for forskningsdrevet innovasjon - Endelig søknad)	28. feb	IIASA Post-doctoral program

Essentials in English

Personal web pages

Remember that the old BIO people pages will not work after 31.12.2009. Use these steps to copy over your material to the people pages on the external web (*we are promised that English versions will be available, but the date of their release keeps being delayed).

- Login to edit mode on your external web personal page at: <http://www.uib.no/login>
- Use your usual UNIX password (I suggest you use Firefox as your browser - the external web works better there)
- Open your "old" page in an Explorer browser window
- Then copy directly from one browser window to the other ...

2009's accounting wraps up 14.12

Turn all bills, refund forms, travels forms in **NOW. Monday 14.12** is the last day! Please note: from now on, the economy department will only accept travel forms after the trip has been completed.

FYI: correct (slow) mail and visiting address for BIO

address for (slow) mail: University of Bergen, Department of Biology, Post Box 7803, N-5020 Bergen
visiting / delivery address: UiB, Department of Biology, Thormøhlensgate 53a (2 floor)

Spare equipment to be given away

At EECRG we have some lab equipment that are no longer in use and will be discarded as we move to the new building. Before throwing these away we would like to know if someone else could use this equipment. If you know of someone that could use either a:

Clinic Flame Photometer 83 for analysing Na og K, or a

Kjeltec 2300 Analyser for analysing nitrogen

please contact **John-Arvid Grytnes** or **Eva Krzywinski** at EECRG.

Moving FAQ

Moving [FAQ](#) (Frequently Asked Questions) is being updated continuously. Please pop in every now and then as new as useful information is published here.

Moving web page for practical issues, furniture needs and spare furniture/equipment

A [web page](#) is now put up to sort out the following:

* Practical issues regarding the new buildings (not phone and computer issues - the information given about this earlier in the process is still valid, i.e. contact BRITA - Stian Abbedissen (Stian.Abbedissen@it.uib.no, phone 40635783)

* Extra furniture needed in your office

* Spare furniture and equipment that you have in your office/lab that others might need

<http://biologi.uib.no/pages/melding.php>

UiB Christmas cards

Electronic Christmas cards are now available from UiB's 'profilorget'. Access them on the intranet via profiltorget (left menu) → postkort (electroniske) (right menu). Cards are available in both Norwegian and English.

INN Monthly mail- December 2009

[For more information – click here](#)

Siste nytt fra BIO

Torsken krymper

Christian Jørgensen sier at fiskeri kan gi lyn-evolusjon. Les mer fra [Nordlys](#).

Søknadsbehandling hos Artsdatabanken

ARTSDATABANKEN er ferdig med sin søknadsbehandling og fra BIO gikk flg. prosjekt inn:

- *The marine benthic fauna of Møre og Romsdal* med **Christoffer Schander** som prosjektleder
- I tillegg er DNS, Uni og Rådgivende Biologer inne i flere av de tildelte prosjektene. Se hele lista [her](#).

EECRG gir bort utstyr til interesserte grupper

I forbindelse med flyttingen så kvitter vi i EECRG oss med litt labutstyr som ikke lenger er i bruk i gruppen. Før vi går til det drastiske skrittet å kaste disse apparatene vil vi gjerne høre om det er noen som har bruk for disse eller om det er noen som vet om noen som har bruk for de. Apparatene er:

Clinic Flame Photometer 83 for analysing Na og K
Kjeltec 2300 Analyser for analysing nitrogen

Ta kontakt med **John-Arvid Grytnes** eller **Eva Krzywinski** i EECRG om du kan hjelpe oss å bli kvitt apparatene.

Lakselusa stor trussel

Are Nylund sier at lakselus er langt farligere enn tidligere antatt. Lusen sprer en dødelig parasitt, som også kan smitte villfisk. Les mer fra [Vesteraalens avis](#)

Hva om kitinhemmerne ikke hadde blitt stoppet?

Etter at det har kommet for dagen at næring og departement inngikk avtale med Miljøvernforbundet i 1999 om å stoppe bruken av kitinhemmere mot lus, har mange stilt seg spørsmålet, hvordan ville ting ha sett ut i dag om denne avtalen ikke hadde blitt inngått. [Kyst.no](#) har spurt professorene **Frank Nilsen** og Tor Einar Horsberg.

Siste nytt fra verden rundt oss



Retningslinjer for sykefravær

Anbefalingen om å holde seg hjemme i 7 dager ved influensa er endret. Helsemyndighetene anbefaler nå at du kan gå tilbake til arbeid/skole/barnehage tidligst 24 timer etter at du er symptomfri. Nedenfor følger UiBs retningslinjer for egenmelding som gjøres gjeldende i denne situasjonen. [Les mer](#).

Elektroniske julekort

De elektroniske Julekortene ligger nå klar på Profiltorget. Du finner dem under menypunktet "Postkort (elektroniske)" i menyen til høyre.



NFR: store satsinger i 2011

Klimautfordringene, forskning i næringslivet, den frie grunnforskningen, utstyr og infrastruktur. Dette er de områdene Forskningsrådet mener bør prioriteres spesielt i 2011. [Les mer](#)

Nyttig forskning i mange programmer

Forskning som er viktig for havbruksnæringen, støttes av flere programmer i Forskningsrådet. Det siste nyhetsbrevet fra Havbruksprogrammet viser noe av bredden og mangfoldet i denne forskningen. [Les mer](#)



Økt forskningsinnsats mot lakselus

Forskningsrådet har bevilget til sammen 40 millioner kroner til nye lakselusprosjekter som settes i gang i 2010. Av dette kommer 15 millioner kroner fra Fiskeri- og havbruksnæringens forskningsfond. Det innebærer en betydelig økt innsats mot lakselus de neste 3-4 årene. [Les mer fra NFR](#) og i [NRK](#), [Dagens Næringsliv](#), [Hegnar.no](#), [Adressa](#), [Trønder-Avisa](#), [mre.no](#), [Vesterålen online](#)



Ledige stillinger for biologer

Sjekk oversikten på [jobbnor!](#)

snarest	Traineestilling - NIVA Chile
11.12	HI: Forsker – Miljøvirkninger av havbruk
12.12	Artsdatabanken: direktør
14.12	Forskningsavdelingen: Rådgjevar (forskningskoordinator)
14.12	Project and Communications Officer at PAGES (Past Global Changes), Bern, Switzerland
16.12	Assisterande fakuletsdirektør (nestleiar) ved Det matematisk-naturvitenskapelige fakultet
20.12	Rogaland: ny stilling i vannressursforvaltning
31.12	2 PhD -positions U of Wellington, New Zealand (molecular biology - coastal marine species)
04.01	Associate/full curator of Invertebrate Paleontology, Florida, USA.
10.01	Executive Officer Scientific Committee on Antarctic Research
14.01	Postdoc Marine Algal Physiologist: Ocean Acidification, Dunedin, New Zealand

Forskning: utlysninger, nye satsinger og prosjekter

Updated Guide for Applicants for the Advanced Grant 2010 Call (third Advanced Grant call)

The third Advanced Grant call (ERC-2010-AdG) was published on the 29. of October, see [here](#). Now the updated Guide for applicants for the call is available, see [here](#).

Marie Curie International Research Staff Exchange Scheme (IRSES)

The action is aimed at strengthening research partnerships through staff exchanges and networking activities between European research organisations and organisations from third countries with which the Community has an S&T agreement (or are in the process of negotiating one), or in countries covered by the European Neighbourhood Policy.

This action will provide support to research organisations to establish or reinforce long-term research co-operation through a coordinated joint programme of exchange of researcher staff for short periods.

[More information here](#).

Closing Date 25 March 2010.



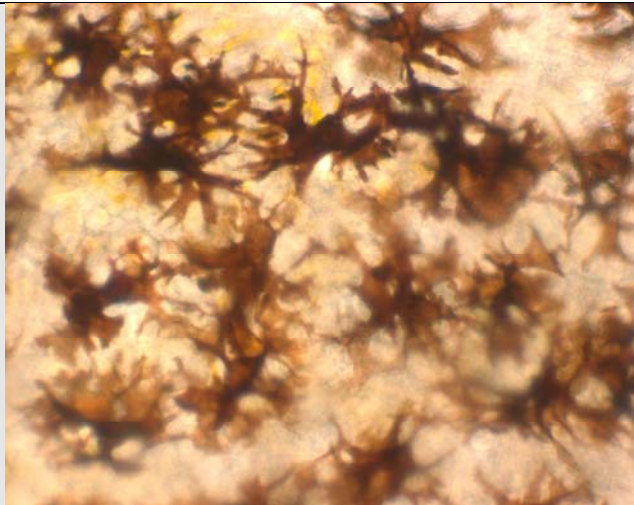
EMBO Post doctoral fellowships

The European Molecular Biology Organisation EMBO is calling for proposals for post doctoral fellowships . Candidates from an EMBC member state up to 3 years after PhD (extra rules for maternity leaves apply) can go to an organisation in another EMBC member state or abroad. Financing for accompanying family members can also be provided.

The candidates must hold a doctoral degree when they start the fellowship, but not necessarily when they apply. It is absolutely necessary that the candidate has at least one first-author paper published or in press in a peer-reviewed international journal.

The **deadline is February 15th 2010**. More information can be found [here](#) and [here](#).

Ukens bilde



Noe skikkelig gamle celler

Photographer: **Harald Kryvi**

Her er et bilde av noen pigmentceller fra et fiskeskjell. Det er fra australsk lungefisk, *Neoceratodus*. Om denne har det vært hevdet at det er verdens eldste nålevende art, fordi mye tyder på at den ikke har forandret seg nevneverdig på de siste 100 millioner år. Så dette er skikkelig gamle celler, kan man kanskje si.

You are invited to submit photos (electronically!) for "Ukens bilde". Please include a very short description and credit information. Picture can be of researchers / students in action, technology, organisms, field sites ...

Please send your pictures to [Elinor Bartle](mailto:Elinor.Bartle) (preferable format jpg, gif; size around 300px sq; saved for web - under 60kb).

Avsluttende mastergradseksamen

Elnaz Golshany: Is there a sex difference in susceptibility to infection when *Daphnia magna* is exposed to *Pasteuria ramosa*? A study based on Batesman's principle

Elnaz Golshany holder onsdag 16. desember avsluttende presentasjon av sin masteroppgave i biodiversitet, evolusjon og økologi.

Tittel på oppgaven: Is there a sex difference in susceptibility to infection when *Daphnia magna* is exposed to *Pasteuria ramosa*? A study based on Batesman's principle

Veileder: Arne Skorping. Sensor: Odd Jacobsen. Bisitter: Per Johan Jakobsen.

Tid & sted: Onsdag 16. desember kl. 13:15, Lite auditorium, 2. etg. HIB.

Alle interesserte velkommen!

Faglige møter

Sommeropphold og postdoc-stipend

Unge forskere kan nå søke om sommeropphold ved IIASA i Wien i Østerrike. Organisasjonen lyser også ut to postdoc-stipend for 2010.

Søknadsfrist er hhv. **18. januar** og **28. februar 2010**. [Les mer](#).



Michelsen Guest Lecture

Dec 14, Lille auditorium, Datablokken HIB, 2 etg. 10:15-11:00 prof. Alfredo Colosimo (Sapienza University of Rome and BIO) will speak on "[Recurrence Quantification Analysis: biological applications](#)"

Sars Centre guest lecture

Dec 15, MBI Sem Room, 16:00, Prof. Markus Affolter from the Biozentrum, University of Basel, Switzerland will speak on: "Branching morphogenesis in flies and fish: in vivo analysis at cellular level." More: [Sars events](#)

Erasmus Mundus Joint Master in Evolutionary Biology (MEME)

MEME is a new two-year research oriented master programme for talented and motivated students who are interested in understanding evolution in all its facets. The MEME programme will address the driving forces of evolution at all levels of organismal organisation (from cells and individuals to populations and ecosystems), and it will allow students to study all kinds of organisms (microorganisms, plants, animals) in all kinds of habitats (marine as well as terrestrial) with a diversity

of approaches (field, lab, theory). The focus of the programme is not only on how evolution shaped life on our planet in the past, but also on how understanding the principles underlying evolution can provide new insights and help to cope with present-day challenges in a variety of fields, including ecology, epidemiology, physiology, immunology, genetics/genomics, bioinformatics, economics and the social sciences.

Only few universities in the world would be able to offer a programme of such broad scope without compromising scientific quality. For this reason, four European universities:

- University of Groningen (Netherlands)
- University of Montpellier II (France)
- Ludwig Maximilians University of Munich (Germany)
- Uppsala University (Sweden)

have joined forces with Harvard University (USA). Together, this consortium is able to put together an attractive multidisciplinary programme that meets highest standards. All students have to study at at least two partner universities, and they will receive either a joint MSc degree from the whole consortium or double degrees from two partner universities.

Being financed by the European Community, MEME has to satisfy the high quality standards imposed the prestigious Erasmus Mundus Programme. Full scholarships are available for MEME students and will be awarded in a selective procedure.

Starting date: September 2010

Application deadline: January 3, 2010 (non-European students); April 15, 2010 (European students)

More information and how to apply: www.evobio.eu

Researchers Night 2010 (Forskningsrådet/EU). Frist 14/12

For sjette år på rad planlegger EU Researchers' Night. Arrangementet er som vanlig lagt til den fjerde fredagen i september, som i 2010 faller på fredag den 24. september. Dette er også Forskningsdagens åpningsdag. Forskningsrådet, ved Forskningsdagens sekretariat, sender inn en felles søknad om midler til norske arrangementer. Forskningsrådet velger gjennom en konkurranse ut hvilke arrangementer som skal være med i søknaden. Det utlyses derfor en konkurranse om å få være med i den felles søknaden til EU. Forslag/søknad sendes innen 14. desember 2009 til egl@forskningsradet.no

Mer om Researchers Night og kravene til søknad: [Les full utlysning her \(pdf\)](#)

I 2009 fikk to arrangementer støtte i Bergen (VilVite og Akvariet).

Invitasjon til MNT-konferansen - "Kunnskap for fremtiden", 9.-10. februar 2010 på VilVite i Bergen

Det matematisk-naturvitenskapelige fakultet ved Universitetet i Bergen arrangerer 9.-10. februar 2010 den årlige MNTkonferansen (matematikk, naturvitenskap og teknologi), på oppdrag fra Kunnskapsdepartementet. Konferansen er en erfaringsspredningskonferanse og ledd i departementets strategi for styrking av realfagene, med tema knyttet til rekruttering og gjennomføring av realfags- og teknologiske studier.

Konferansen finner sted på VilVite. Se konferansens [hjemmeside](#) for program, informasjon om foredragsholderne og om påmelding etc. Påmelding senest innen 15. januar 2010.

Summer school programmes

Date	Location	Course title	application deadline
May 18-June 1	University of Iceland	Introduction to Hydrodynamic Modelling	20 February 2010
June 15-29	University of Iceland	Ecological Modelling	20 February 2010
July 1-22	University of Iceland	Fisheries Ecology: Management and Conservation of Marine Resources	20 February 2010
July 4-20	White Sea Biological	Embryology of marine invertebrates	31 January

Nye artikler

Har du en artikkel, kapittel eller bok som ikke har stått her?
Du kan sende bibliografi og abstract (helst i Word-format) til Jarl så snart du har sidetall.

Jon Bent Kristoffersen & Anne Gro Salvanes: genetikk og økologi til lysprykkfisk på norskekysten

Kristoffersen JB, Salvanes AGV 2009. Distribution, growth, and population genetics of the glacier lanternfish (*Benthosema glaciale*) in Norwegian waters: Contrasting patterns in fjords and the ocean. MARINE BIOLOGY RESEARCH 5: 596-604

Abstract: The mesopelagic fish *Benthosema glaciale* was found to be widely distributed in the Norwegian Sea and several west Norwegian fjords, but mostly absent above the continental shelf. Areas with bottom depths of less than 300 m were almost totally devoid of *B. glaciale*. There were significant differences in allozyme frequencies and growth between fjords and the Norwegian Sea, with a slower growth towards a larger asymptotic length in the oceanic population. Allozyme and growth differences among fjords were smaller yet significant after pooling samples within each fjord, which suggests there is only limited connectivity among these fjords. The physical barrier to gene flow represented by the continental shelf probably serves as an isolating mechanism between the fjordic and oceanic populations, while shallow sills at the mouths of fjords may restrict gene flow, and in particular limit exchange of adults among fjords. The catch per unit effort of *B. glaciale* was generally higher in fjords, and in some cases as much as one to two orders of magnitude higher than in the Norwegian Sea. We discuss physical characteristics of fjords that may make them a beneficial habitat for *B. glaciale* and other mesopelagic fish compared to the Norwegian Sea.

Diep Mach & Ragnar Nortvedt: kjemisk og næringsmessig kvalitet av ensilasje fra fisk og krabbe

Mach DTN, Nortvedt R 2009. Chemical and nutritional quality of silage made from raw or cooked lizard fish (*Saurida undosquamis*) and blue crab (*Portunus pelagicus*). JOURNAL OF THE SCIENCE OF FOOD AND AGRICULTURE 89: 2519-2526

Abstract: Twelve silages were prepared from uncooked or cooked lizard fish (*Saurida undosquamis*) and blue crab (*Portunus pelagicus*) and stored at ambient temperature (30 +/- 2 degrees C) for 60 days. The antioxidative effect of adding ethoxyquin was also investigated. Generally, the nutritional quality of all the silages was stable for up to 60 days of storage and the composition of raw materials was reflected in the composition of the silages. Crab had a lower level of crude protein than fish (85 versus 162 mg kg(-1)), but a higher level of ash (96 versus 36 g kg(-1)); moreover, there were significant differences in nutritional composition between uncooked and cooked materials. High level of ash in crab required addition of high levels of formic acid in crab-related silages. At the end of the experiment cooked silages showed a tendency for spoilage; in particular, maggots were observed in cooked crab silages on the last few days of the experiment. Comparison of treatments with or without ethoxyquin showed that only rancidity of fish silage groups was higher without addition of ethoxyquin. Uncooked materials are more suitable for prolonged storage than cooked materials, and it is probably not necessary to add antioxidants to silages made from material with low lipid content.

Christel Krossøy: uttrykk av K-vitamin-relaterte gener i laks

Krossøy C, Ørnsrud R, Wargelius A 2009. Differential gene expression of bgp and mgp in trabecular and compact bone of Atlantic salmon (*Salmo salar* L.) vertebrae. JOURNAL OF ANATOMY 215: 663-672

Abstract: The tissue-specific gene expression of the vitamin K-dependent proteins bone gamma-carboxyglutamate-protein (BGP) and matrix gamma-carboxyglutamate-protein (MGP) in Atlantic salmon (*Salmo salar* L.) was investigated. In previous studies, BGP, the most abundant non-collagenous protein of bone, was almost exclusively associated with bone, whereas the non-structural protein MGP has a more widespread tissue distribution. In-situ hybridization of juvenile Atlantic salmon (similar to 40 g, fresh water) vertebrae demonstrated expression of bgp and mgp mRNA in osteoblasts lining the trabecular bone, whereas no staining was observed in the compact bone. By separating the trabecular and compact bone of both juvenile (similar to 40 g, fresh water) and adult (similar to 1000 g, sea water) Atlantic salmon, we observed that the two vertebral bone compartments

displayed different levels of bgp, whereas no such differences were seen for mgp. Measurements of the mineral content and Ca/P molar ratio in adult salmon revealed no significant differences between trabecular and compact bone. In conclusion, the osteoblasts covering the salmon vertebrae have unique gene expression patterns and levels of bgp and mgp. Further, the study confirms the presence of mRNA from the vitamin K-dependent proteins BGP and MGP in the vertebrae, fin and gills of Atlantic salmon.

John-Arvid Grytnes: årsaker til diversitet av lav på grantrær

Lie, Marit H., Arup, Ulf, Grytnes, John-Arvid, Ohlson, Mikael 2009. The importance of host tree age, size and growth rate as determinants of epiphytic lichen diversity in boreal spruce forests.

BIODIVERSITY AND CONSERVATION 18: 3579-3596

Abstract: The amount of large and old trees has decreased in the boreal forests during the last centuries of forestry. Such trees are important habitats for epiphytic lichens and there is a growing concern for lichen species that are associated with large and old trees. However, only little is known about the relative importance of tree size versus age as determinants of lichen diversity. Here we have determined the size, age and growth rate of 157 Norway spruce trees and recorded the occurrence of epiphytic lichen species on their branches and lower stems. The study includes crustose lichens and was done in two old-growth forests in SE Norway. Tree age and tree size were the parameters that explained the largest part of epiphytic lichen diversity. Only the growth rate of the most recent time period, i.e. 1984-2004, showed a statistically significant relationship to diversity. There was no indication of a stabilising species number with increasing tree age. Slow-growing and old trees were, however, mainly of importance to the lichen species growing on stems, and this set of species were in general adversely affected by a large amount of branches. The opposite was the case for the species that were confined to branches as their diversity increased when the amount of branches increased. Our study adds empirical data to support the importance of large and old trees as bearers of biodiversity in boreal forests. Site preservation and patch retention of groups of old and large trees is recommended as measures to maintain epiphytic lichen diversity.

Albert K. Imsland: tetthetsavhengig vekst hos flekksteinbit

Imsland Albert K., Snorri Gunnarsson, A. Foss, Benedikt Sigurdsson and Sindri Sigurdsson 2009.

Stocking Density and its Influence on Growth of Spotted Wolffish, *Anarhichas minor*, in Shallow Raceways. JOURNAL OF THE WORLD AQUACULTURE SOCIETY 40: 762-770

Abstract: We compared growth properties of spotted wolffish with initial mean weight (\pm SE) 3.65 (\pm 0.15) kg reared in shallow raceways at three different densities (50, 70, and 90 kg/m², corresponding to approx. 170, 240, and 310 kg/m³) in a 447-day-long growth trial at ambient temperature (mean (\pm SD), 4.2 C \pm 1.9). Growth in all three groups was comparable, but there was a trend toward higher growth at the highest density. Final mean weights (kg \pm SE) were 4.90 (\pm 0.15), 4.80 (\pm 0.16), and 5.05 (\pm 0.11), at the 50, 70, and 90 kg/m² density, respectively. Initially, growth rates were higher at the 90 kg/m² density group compared to the two other densities, but overall growth rates were similar in all three groups. Feed conversion efficiency differed and was higher at the two highest densities compared to lowest density. The acid–base balance was influenced by the density treatment as there was a general trend toward higher partial pressure of CO₂ and HCO⁻₃ in the 90 kg/m² group. Calculated productivity increased almost linearly with increasing stocking density and was found to be 24, 42, and 66 g/m²/day at 50, 70, and 90 kg/m², respectively. The results show that the optimum density conditions for farming large spotted wolffish, both with respect to growth rate, feed conversion, and productivity are at densities equal to or higher than 90 kg/m².